

SENSAPHONE® ISACC



FEATURES

Alert Dial-Out:

Voice, data or pager
Up to 8 dial out numbers

Input:

16 User-definable digital or analog inputs
User-defined alert recognition time

Output:

8 digital TTL outputs
4 analog outputs
1 Built-in 5 Amp relay and alarm buzzer

Programming:

Built-in C language interpreter
Remote data or local data programming
No additional software required
Password access protection

Backup Battery:

Rechargeable 10-14 hour Gel Cell backup battery
Low-battery detect

Computer Interface:

1200 baud modem
Local RS232 serial port
RS485 two-wire network port

Multi-tasking:

All monitoring and control is continuous,
independent of other functions

Data logging:

Stores 512 events on board
Additional history stored on PC
Time-stamped "snapshots"

System Status:

Status LED's for local monitoring
On-board buzzer
Built-in diagnostics with microprocessor
supervisory circuit assures system integrity
On-demand status reports to authorized
personnel in voice or data mode

Other Features:

Memory retention if battery power
is exhausted
Real-time clock and calendar with
Lithium battery backup
Answering machine compatible
Lightning protection
ABS NEMA-4 enclosure with
110 Volt power supply
Solid state output relays (optional)

SPECIFICATIONS

Memory:

96K EPROM
64K RAM with Lithium battery backup

Input:

10 bit resolution
Types: dry contact, pulse count, 4-20 mA,
0-5 Volt, Thermistor

Output:

8 bit Analog resolution
Types: Digital: TTL logic level
Relay: SPDT Form C
Analog: 0-10 Volt
Rating: Digital: 20 mA sink/source
Relay: 5 A 250 V AC
Analog: 0-10 Volt

Communication Interface:

RJ11C: Telephone connection for built-in
modem and digital voice

RS232C: Local serial port

RS485: Networking port

Communication Speed:

Built-in modem: 1200 baud

RS232C: 9600 baud

RS485: 38.4K baud

Size and Weight:

Board level: 8" W x 11" H x 1.5" D, 1lb. 8oz.

With battery & ABS NEMA-4 enclosure:

11.8" W x 23.6" H x 5.2" D, 16 lbs. 10 oz.

Power Requirements:

24 V AC (board level unit)

110 V AC

Power Consumption:

20 Watts

Battery Backup

10-14 hour Gel Cell

Enclosure:

ABS NEMA-4

Operating Environment:

32°-120°F, 10% to 95% RH

Real-time Clock:

Clock & calendar w/Lithium battery
backup

Data Logger:

Stores 512 events on board

Local Indicators:

Status LEDs
Onboard buzzer

System Integrity:

Internal microprocessor watchdog
External microprocessor supervisory circuit

Programming:

Local: IBM or compatible via RS232C

Remote: via Hayes-compatible modem

Stored in non-volatile memory

Specifications subject to change without notice.

Phonetics, Inc.

HIGH TECHNOLOGY FOR YOUR PEACE OF MIND

901 Tryens Road Aston, PA 19014 Phone (610)558-2700 Fax (610)558-0222 <http://www.sensaphone.com>

PH07/97

A SENSAPHONE REMOTE MONITORING SYSTEM

ISACC

INTELLIGENT SYSTEM FOR AUTOMATIC CONTROL AND COMMUNICATION



- MONITORING
- COMMUNICATIONS
- CONTROL
- DATA LOGGING

Phonetics, Inc.

SENSAPHONE® ISACC

ISACC COMBINES MONITORING, COMMUNICATIONS AND CONTROL CAPABILITIES INTO A SINGLE SOPHISTICATED SYSTEM.

IF YOU CAN'T BE THERE, ISACC TAKES CORRECTIVE ACTION AUTOMATICALLY.

ISACC can turn on or turn off your equipment; it can control heating and cooling; it can set temperatures and control process valves.

With ISACC's extensive programming capabilities, and digital and analog inputs and outputs, you achieve the flexibility of a custom designed system without the high cost.

ISACC may be the most versatile and complete way available today to protect your equipment, your processes, and your entire facility.

MONITORS VIA 16 DIGITAL OR ANALOG INPUTS

Unlike other systems, ISACC lets you select a digital or analog sensor for each of the 16 inputs. You can program ranges to suit your specific monitoring requirements. Digital functions include open/close dry contact input and/or pulse counting. Analog can be read as a percentage, or via a user-defined lookup table.

ALERTS YOU 4 DIFFERENT WAYS

When problems occur, ISACC automatically dials up to 8 phone numbers to alert key personnel. Each number can be dialed independently in voice or data mode. ISACC keeps calling the numbers in sequence until it receives verification that an authorized person has been reached.

Local alarm: An acoustic alarm prompts immediate action from onsite personnel.

Voice dial-out: Delivers alert messages in voice-synthesized English. Even leaves messages on an answering machine.

Data mode: The system contacts key personnel at their computers through standard tele-

phone lines. Alert messages pop up onscreen. **Pager:** ISACC even dials directly to a pager and identifies itself.

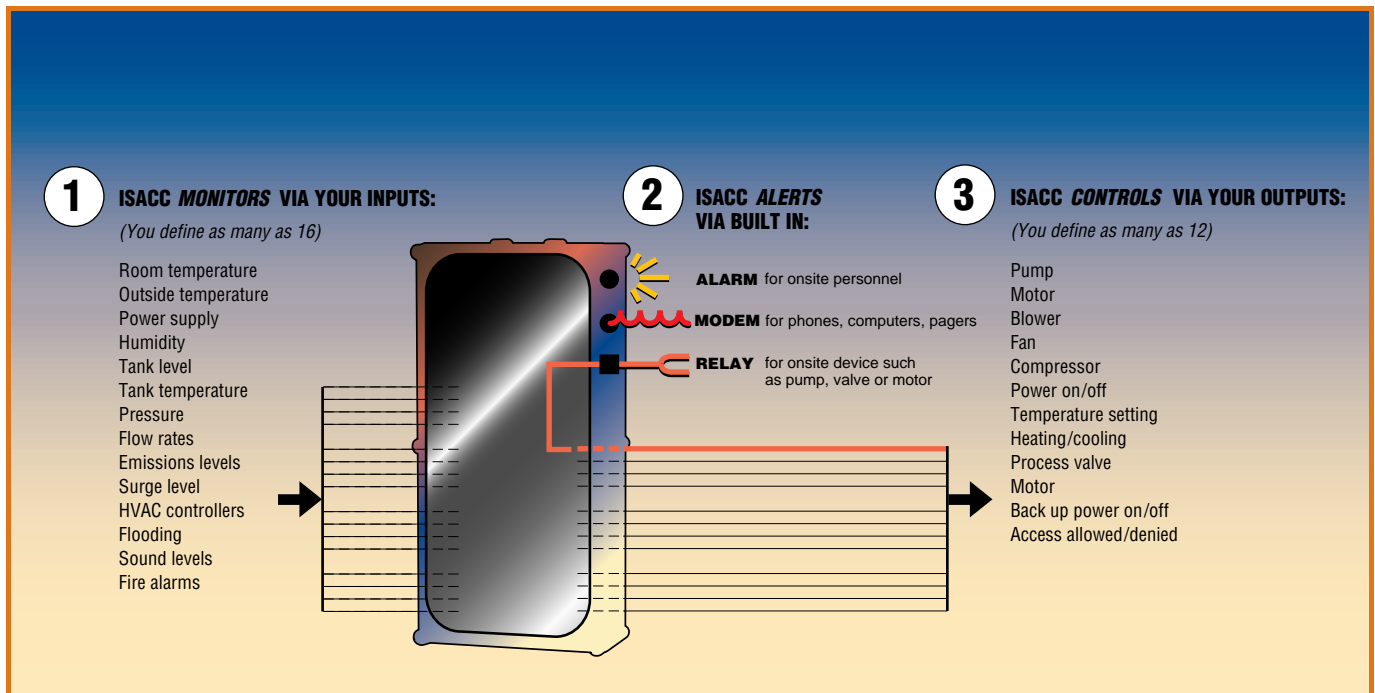
CONTROLS VIA 8 DIGITAL AND 4 ANALOG OUTPUTS

ISACC's twelve outputs maintain *automatic* control for you: Eight user-defined **digital** outputs provide on/off control of the conditions you've chosen. Four **analog** outputs provide proportional control for your analog equipment. You can adjust controls right from your PC.

All inputs and outputs are protected against over-voltage as well as reverse voltage.

BUILT-IN DATA LOGGER

ISACC's data logging function allows you to log activity such as trends, usage and other factors. 512 events can be stored internally and retrieved by modem or via the local RS232 port. All data is stored in the system's non-volatile memory, protecting data even during loss of both AC and battery power. Time is kept by an on-board real-time clock with its own battery backup.



PROGRAMMING YOUR ISACC

You can program ISACC remotely, from any PC, with its user-friendly software.

Two levels of programming are available. The first is a simple point-and-click setup to define the parameters for the monitoring and alarming features. For advanced decision-making, ISACC has a built-in C language interpreter, allowing the system to schedule actions on a variety of input factors entered directly from a C program. (For example, temperature control may be based on indoor and outdoor temperatures, along with rate of temperature change.)

You can copy programming from one unit to another, upload and download C-programs. There's even a feature that lets you view selected input values as a graph in real time.

PHONETICS BACKS UP EVERY SENSAPHONE ISACC

Phonetics, Inc. is a pioneer in the design and manufacture of remote monitoring systems. We continue to be at the forefront, setting industry standards for technical innovation. With an installed base of more than 170,000 Sensaphone products—from small models to sophisticated industrial systems such as ISACC—Phonetics prides itself on providing flexibility and features at an affordable price.

Your ISACC comes with responsive technical support and a comprehensive warranty.

Phonetics, Inc. High technology for your peace of mind.

Contact the Phonetics Sales Department for further details at (610) 558-2700, or visit our website at <http://www.phonetics-monitoring.com/>

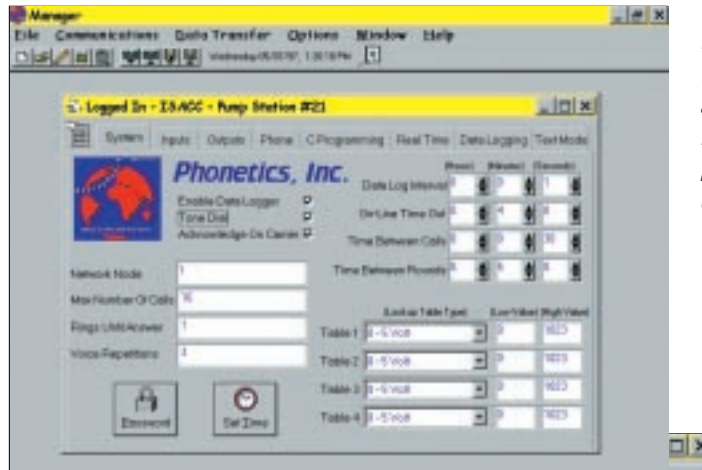
ISACC INCLUDES SPECIALLY DESIGNED SOFTWARE: *MANAGER*

You can program ISACC, locally or remotely, using free *Manager* software. Its enhanced graphical user interface works with all versions of Microsoft Windows™ (3.1, 95 and NT). *Manager's* user-friendly menus allow you to program and maintain your ISACC with ease.

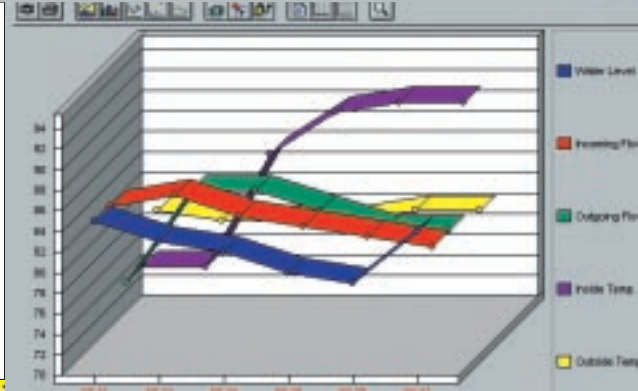
Consider these important features:

- Easy point-and-click programming
- Real-time graphics screen
- Wide range of report options, generated at times you've specified
- Allows you to view data log information in a grid, or plot it using 3D charts and graphs
- Lets you maintain multiple remote ISACCs to a centralized PC
- Enables you to receive and process alarms from multiple ISACCs

Programming ISACC is quick and easy with Manager's point-and-click interface.



Real-time data or stored data is easily represented in colorful charts and graphs.



Time/Date	Input 1	Input 2	Input 3	Input 4	Input 5
5/1/97 5:21:30 PM	45	4491	4471	??	??
5/1/97 5:21:40 PM	45	4554	4479	??	??
5/1/97 5:21:45 PM	45	4538	4552	??	??
5/1/97 5:21:50 PM	45	4537	4521	??	??
5/1/97 5:21:55 PM	45	4712	4595	??	??
5/1/97 5:22:00 PM	45	4742	4535	??	??
5/1/97 5:22:05 PM	45	4751	4724	??	??
5/1/97 5:22:10 PM	45	4773	4767	??	??
5/1/97 5:22:15 PM	45	4791	4785	??	??
5/1/97 5:22:20 PM	45	4798	4810	??	??
5/1/97 5:22:25 PM	45	4804	4816	??	??
5/1/97 5:22:30 PM	45	4804	4834	??	??
5/1/97 5:22:35 PM	45	4798	4834	??	??
5/1/97 5:22:40 PM	45	4815	4840	??	??
5/1/97 5:22:45 PM	45	4816	4840	??	??
5/1/97 5:22:50 PM	45	4798	4847	??	??
5/1/97 5:22:55 PM	45	4815	4847	??	??

Data history can also be viewed in a grid, allowing you to see specifics of the data.