



WEB600

Web-Based Monitoring and Alarm Notification



SENSAPHONE®
REMOTE MONITORING SOLUTIONS

The ALL NEW Sensaphone Web600

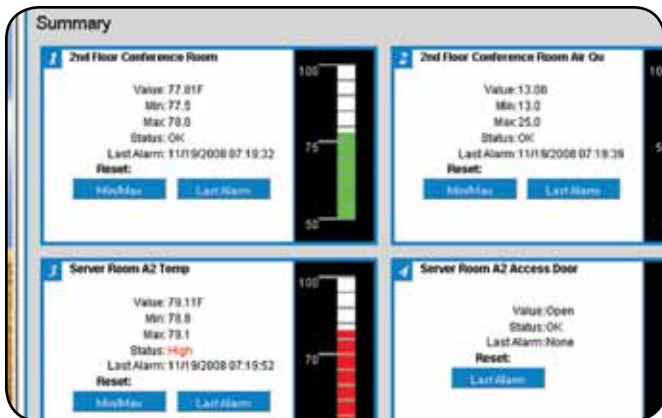
provides flexible web-based remote monitoring at an affordable price. Keep track of critical temperatures and other conditions and be notified immediately when current values exceed the normal range. Completely standalone and easy to use, the Web600 can be used for monitoring cold food storage, medical cold storage, and other temperature sensitive areas like computer rooms and data centers. In addition to temperature monitoring, the Web600 can also read values from humidity sensors, air quality sensors, water leak detection sensors and much more.





SENSOR INPUTS:

Connect up to six external sensors to monitor a variety of equipment and conditions. Each input zone can be connected to a temperature sensor, an analog transducer, or a dry contact switch.



WEB STATUS:

Live status and history is only a webpage away. The Web600 built in web server provides quick and easy information about your monitored conditions. Even time stamped history reports are readily available online.

ALARM NOTIFICATION:

When monitored conditions exceed normal values, the Web600 will notify you immediately by sending out e-mail alarm messages, and even text messages. Up to eight people can be contacted to make sure that proper action is taken.



OPTIONAL BATTERY BACKUP:

With the addition of the optional battery backup module, the Web600 can monitor for power failures and stay operational for two full hours while the power is out.

Web600 Unit1 Battery:DV Description: Environment
 location: Office Building A1 Power: 4.74V

Sensor Programming

Zone 1 | Zone 2 | Zone 3 | Zone 4 | Zone 5 | Zone 6 | Power | Batt

Input: Enabled Disabled
 Input Name: 2nd Floor Conference Room
 Input Type: Temp 28k F
 Units:
 Calibration: 0.0
 Recognition Time: 00 Hours 00 Minutes 03 Seconds
 Table Low: 0.0
 Table High: 1.0
 Alarm Delivery: Enabled Disabled
 Alarm Low: 0.0
 Alarm High: 100.0
 Alarm Reset: Enabled Disabled
 Alarm Reset Time: 00 Hours 00 Minutes 00 Seconds
 Return to Normal: Enabled Disabled
 Gauge Low: 50.0
 Gauge High: 100.0
 Alarm Delivery Schedule: [View/Edit](#)

Datalog Settings

Mode: Continuous While In Alarm Disabled
 Normal Interval: 00 Hours 00 Minutes 00 Seconds
 Alarm Interval: 00 Hours 00 Minutes 00 Seconds

WEB PROGRAMMING:

Built in web server for easy access to programming and status. Just point your browser to the Web600's webpage and fill in the blanks for a quick configuration.

SPECIFICATIONS

ALARM NOTIFICATION

METHODS:

- E-Mail, Text Messages, SNMP Traps
- 8 Alarm escalation levels
- Comprehensive scheduling per input, profile, and alarm destination

DESTINATIONS:

- 8 Programmable User Profiles
- 4 programmable alarm destinations per profile

COMMUNICATION TYPES:

- E-Mail – SMTP
- Text Messages
- Web page – Supported formats HTTP, PDA, WAP, and XML
- SNMP – MIB with Traps, GET, GETNEXT, and SET
- MODBUS®/TCP Slave Conformance Class 0 and 1

INPUTS:

- 6 Universal Inputs
 - Normally Closed / Normally Open Dry Contact
- 2.8K / 10K Thermistor
- 4-20mA Current Loop
- 12 Bit Resolution

DATA LOGGING

- 32,000 Samples (all samples include data date and time)
- 1 second to 1 month sampling rate
- User programmable channel selection
 - Zones 1 – 6
 - Battery
 - Input Power

COMMUNICATION PORTS:

- Ethernet 10/100Base-T

STANDARDS:

- FCC Part 15-B Compliant

LOCAL INDICATORS:

- Alarm Status LED
- Power Status LED
- Ethernet link and Activity LEDs

POWER REQUIREMENTS:

- 120VAC 50/60Hz (Standard)
- 120/220VAC 50/60Hz (International version)
- Optional Battery Backup Module (FGD-W610-B)
 - Provides 2 hours of backup

OPERATING CONDITIONS:

- 0-90% RH, non-condensing
- 0-50°C (32-122°F)

PHYSICAL PROPERTIES:

- 5.5" x 3.25" x 1.25"
- 0.5lbs

ACCESSORIES

EXTERNAL BATTERY BACKUP MODULE:

Web600 Battery Backup.....FGD-W610-B



AVAILABLE SENSORS:

2.8K Temperature Sensor.....	FGD-0100
2.8K Weatherproof Temperature Sensor.....	FGD-0101
10K Weatherproof Temperature Sensor.....	FGD-0102
10K Indoor Decorator.....	FGD-0103
10K Immersion Temperature Sensor.....	FGD-0105
J Type Thermocouple/4-20mA.....	FGD-0220
Carbon Monoxide Sensor.....	FGD-0065
Air Quality Sensor.....	FGD-0066
Humidity 4-20mA Transmitter.....	FGD-0052
Spot Water Detector.....	FGD-0013
Zone Water Detector.....	FGD-0056
Magnetic Reed Switch.....	FGD-0006
Infa-Red Motion Detector.....	FGD-0007
Smoke Detector.....	FGD-0049

A complete accessory specification sheet is available for all supported sensors. Please visit www.sensaphone.com for more information.

Specifications subject to change without notice.

SENSAPHONE®
901 TRYENS ROAD
ASTON, PA 19014
PH: 610-558-2700
F: 610-558-0222
WWW.SENSAPHONE.COM

Distributed By:

